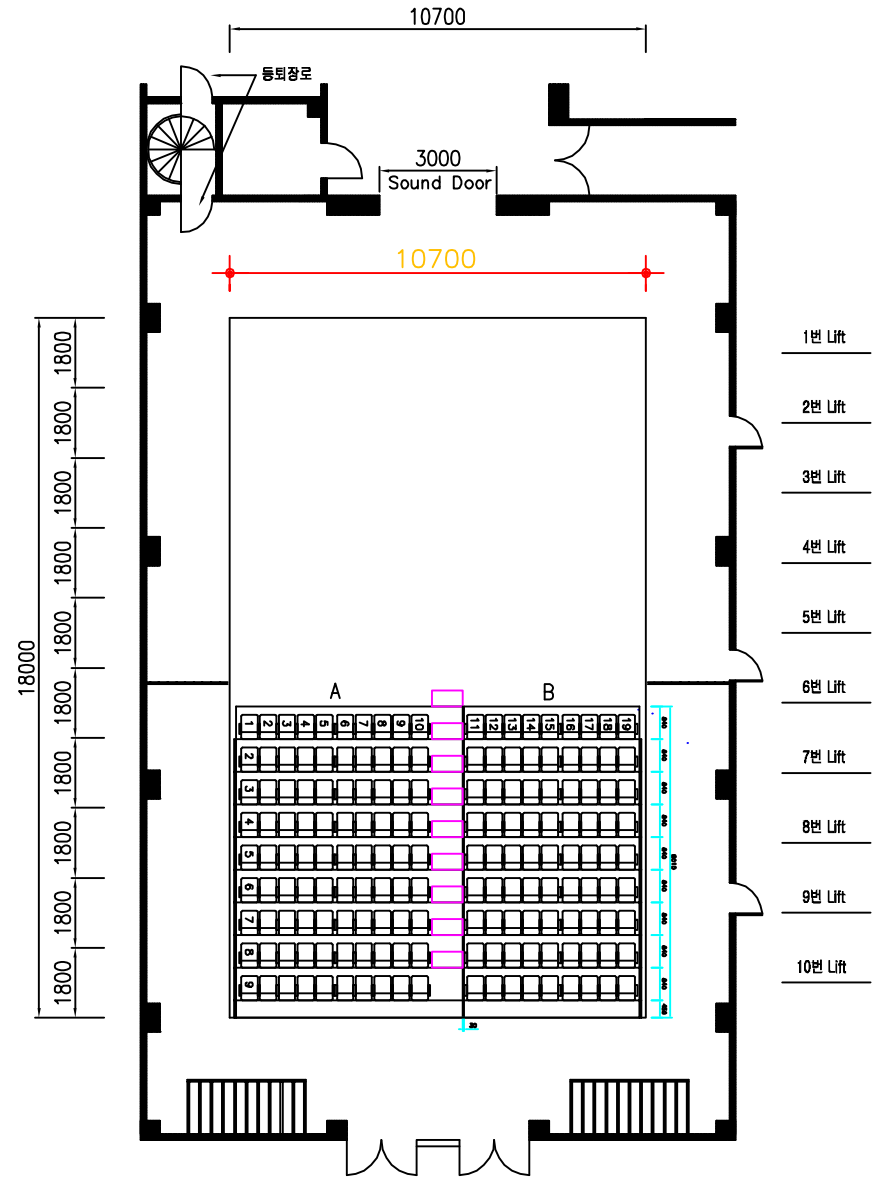
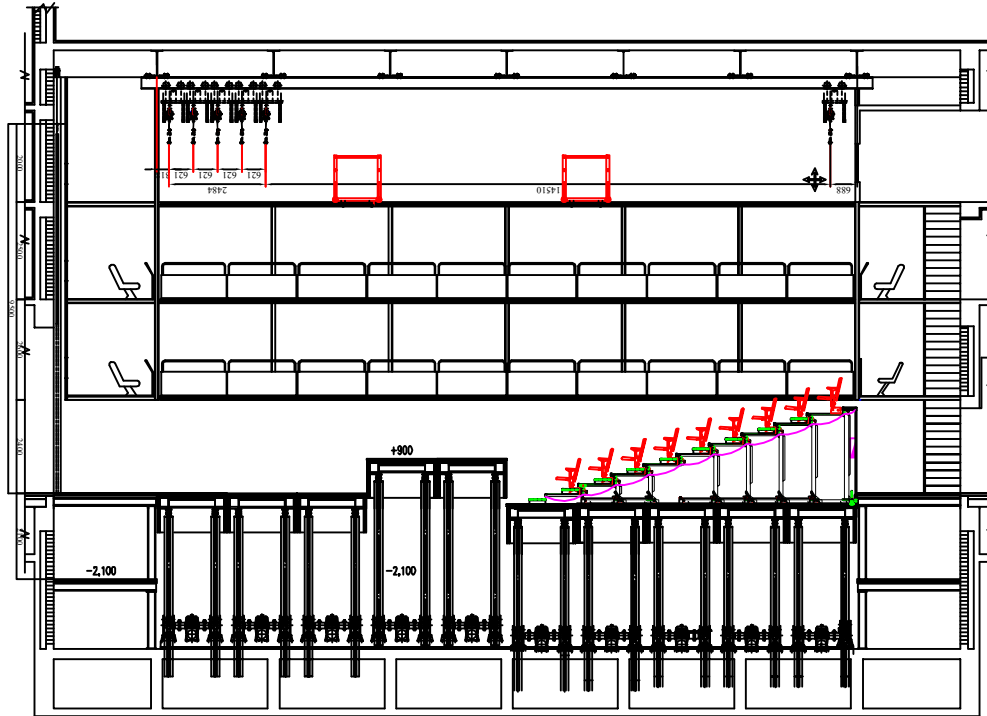


### STAGE MACHINERY TECHNICAL DATA

No	NAME	SPEED	WEIGHT	RANGE	비고
1	STAGE LIFT	0.1 m/s (Lift 1~8번)	S : 10 ton	▲ 0.9 m	
		0.05 m/s (Lift 7~10번)	M : 5 ton	▼ -2.1 m	
2	POINT HOIST	0.5 m/s	150 Kg / 1 point	▲ 9.1 m ▼ 1.0 m	4포인트 x 8열 (양방향 상/하 이동 및 포인트별로 좌/우 이동이 가능)
3	MOVABLE LIGHTING BRIDGE	0.1 m/s	2 ton		전동으로 필요한 위치로 이동하여 조명기구를 설치 사용 (2층)
4	SOUND DOOR	0.1 m/s			도어 중앙부에 동회광용 대방어 문 (1m x 2m)



TITLE	
DATE	
COMPANY	
PRODUCER	

Seoul Arts Center / Seoul Opera House  
 700, Seochu-Dong, Seochu-Gu, Seoul, Korea  
 JAYU THEATRE STAGE FLOOR PLAN / SECTION

SCALE	1 / 100
DESIGNER	
REMARK	