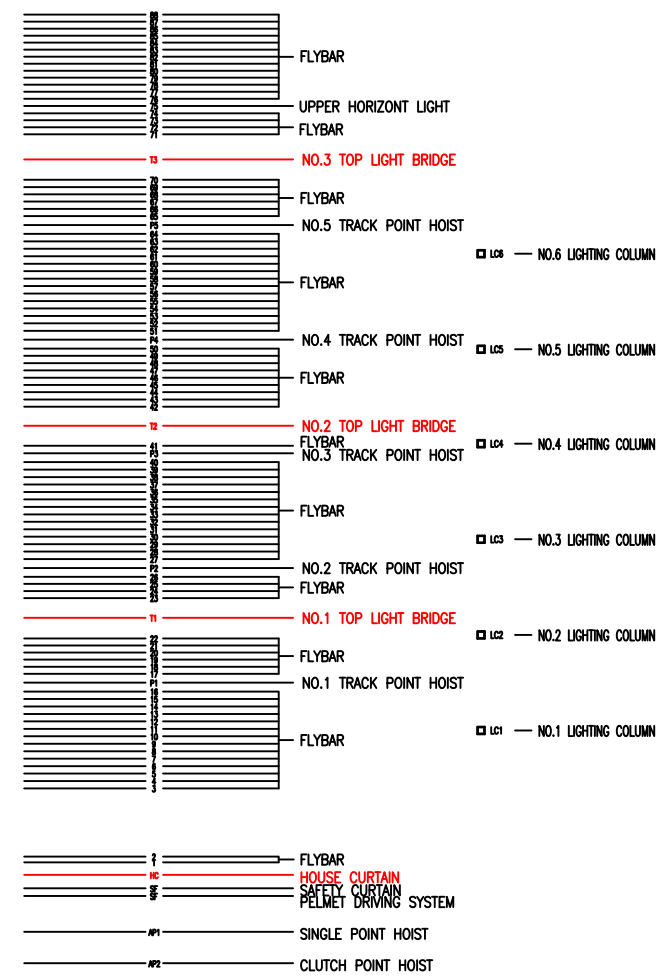
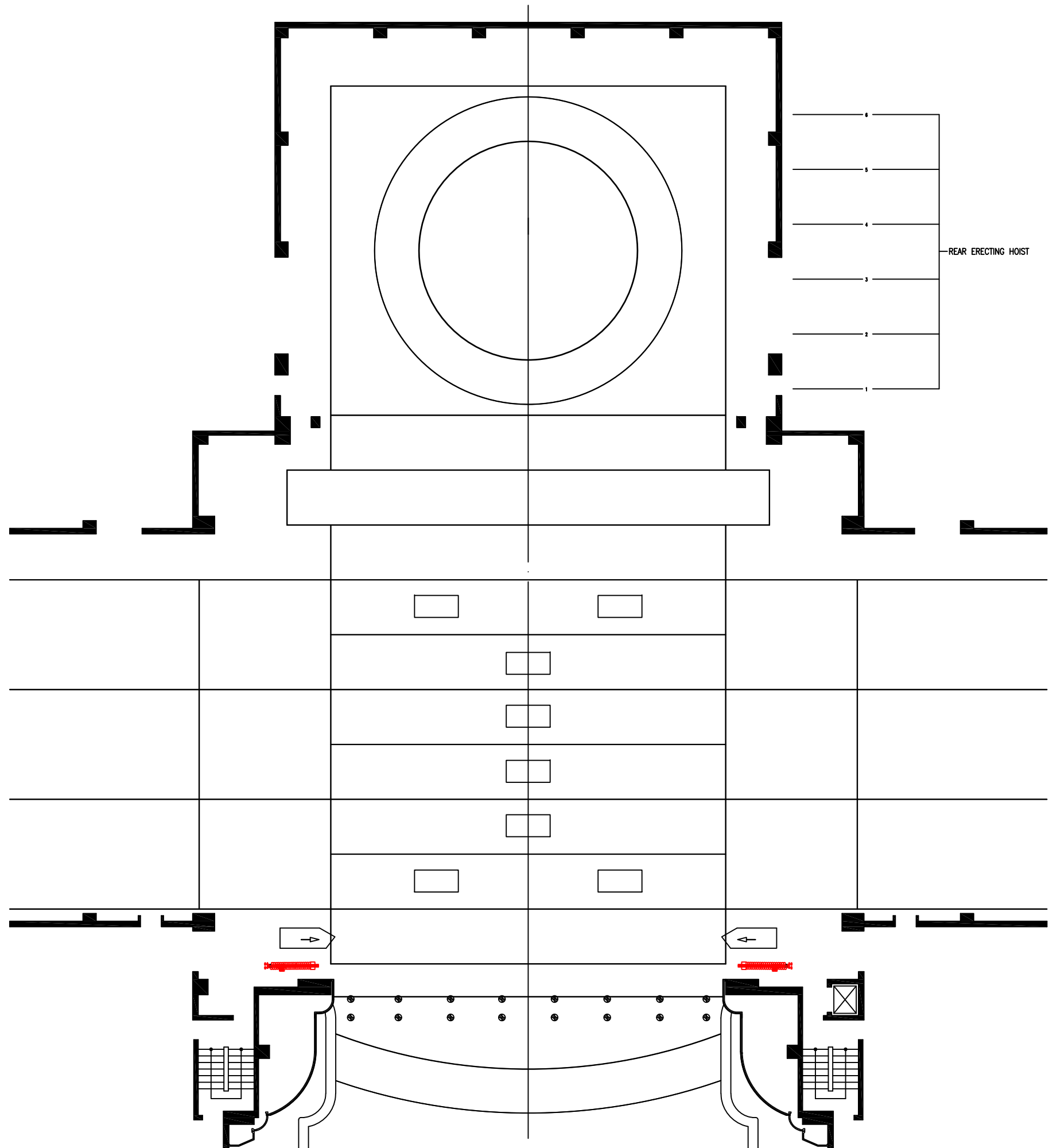


### STAGE MACHINERY TECHNICAL DATA

OVER HEAD MACHINERY				UNDER MACHINERY			
NAME	SPEED	LOAD	MOVING	NAME	SPEED	LOAD	MOVING
PELMET DRIVING SYSTEM	0.2 m/s	500 Kg	Δ 12 m	STAGE LIFT	0.2 m/s	S: 45 ton	Δ 4 m
	VARIABLE		▽ 0 m		VARIABLE	M: 24.2 ton	▽ 4 m
	1.8 m/s		Δ 27 m		0.025 m/s	S: 9.85 ton	Δ 0.5 m
HOUSE CURTAIN (VERTICAL)/(HORIZONTAL)	VARIABLE		▽ 0 m	TOP LIFT		M: 0 ton	▽ 0.5 m
	2.0 m/s		Δ 18.7 m	ORCHESTRA ELEVATOR No1	0.025 m/s		Δ 0 m
	VARIABLE		▽ 0 m	ORCHESTRA ELEVATOR No2	0.025 m/s		Δ 0 m
PROSCENIUM BRIDGE	0.05 m/s	5000 Kg	Δ 11 m	SIDE WAGON LEFT/RIGHT	0.4 m/s	S: 27 ton	▷ 24 m
PROSCENIUM TOWER	VARIABLE		▽ 0 m		VARIABLE	M: 5 ton	
FLYBAR	1.8 m/s	1000 Kg	Δ 28 m	REAR STAGE WAGON	0.4 m/s	S: 81 ton	▷ 25 m
TOP LIGHT BRIDGE	0.2 m/s	1500 Kg	Δ 20 m	TURNTABLE & RING	1.0 m/s	S: 11.5 ton	360°
	VARIABLE		▽ 0 m		VARIABLE	M: 5 ton	
SINGLE POINT HOIST	0.3 m/s	800 Kg	Δ 12 m	COMPENSATING WAGON	0.2 m/s	S: 22.5 ton	▷ 2.5 m
	VARIABLE		▽ 0 m		VARIABLE	M: 0 ton	
TRACK POINT HOIST	1.2 m/s	300 Kg	Δ 28 m	BACKCLOTH ELEVATOR	0.1 m/s	S: 43.5 ton	Δ 6 m
	VARIABLE		▽ 0 m		VARIABLE	M: 12 ton	▽ 0.33 m
LIGHTING COLUMN	0.3 m/s	300 Kg	Δ 10 m	WAGON COMPENSATING LIFT SIDE STAGE RIGHT/LEFT	0.025 m/s	S: 45 ton	Δ 0 m
	VARIABLE		▽ 0 m	WAGON COMPENSATING LIFT REAR STAGE	0.025 m/s	S: 135 ton	Δ 0 m
SOUND DOOR	0.5 m/s		Δ 12 m	COMPENSATING LIFT SIDE STAGE RIGHT/LEFT	M: 2 ton	▽ 0.33 m	
	VARIABLE		▽ 0 m		COMPENSATING LIFT REAR STAGE	0.025 m/s	S: 15 ton
REAR ERECTING HOIST	0.2 m/s	250 Kg	Δ 13 m	COMPENSATING LIFT REAR STAGE	M: 2 ton	▽ 0.33 m	
	VARIABLE		▽ 0 m			0.025 m/s	S: 22.5 ton
CRANE HOIST	0.1 m/s	1000 Kg	Δ 13 m			M: 2 ton	▽ 0.33 m
	VARIABLE		▽ 0 m				
SAFETY CURTAIN	0.325 m/s		Δ 12 m				
	VARIABLE		▽ 0 m				
SMOKE HOOD	0.25 m/s		Δ 1.5 m				
	VARIABLE		▽ 0 m				



TITLE	Seoul Arts Center / Seoul Opera House	SCALE	A1 : 1 / 100
DATE		DESIGNER	
COMPANY		REMARK	각 무대간의 간격으로 무대치수는 도면과 오차가 있을 수 있으므로 정밀한 세트제작시 실측을 요함.
PRODUCER			

700, Seocho-Dong, Seocho-Ku, Seoul, Korea

## OPERA HOUSE STAGE FLOOR PLAN